

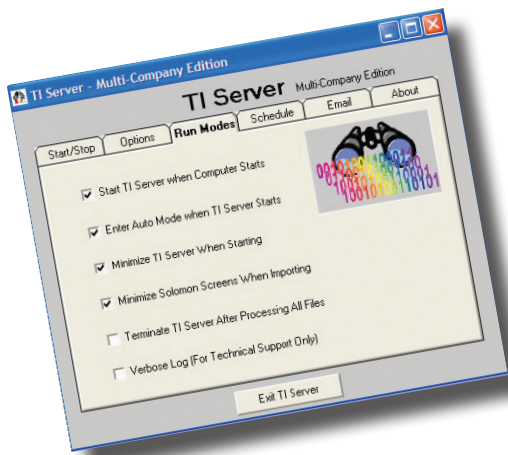
Still importing the same old way?

TI Server. Automated Data Import for Dynamics SL

We've made importing easy, dependable, flexible and automatic.

If you do regular imports into Solomon, you need TI Server.

TI Server works in conjunction with Solomon's Transaction Import manager but corrects deficiencies in TI and adds functionality to Transaction Import.



Features:

- Automatically imports data into any Solomon screen without manual intervention
- Provides a way to fill in missing data prior to processing
- Intelligently analyzes the results of a transaction import process to return meaningful errors, remove spurious error messages, and determine the success or failure of a transaction import process
- Maintains a separate Activity Log with time-stamped activity, import results and statistics
- Accepts user-defined programming to pre-process data or execute other user-defined programs on success/failure
- Sends email alerts messages with import-specific body text to email distribution lists
- Validates data before importing, or creates vendors, customers, etc. if they don't exist
- Schedules imports to run, or not run, during specific times
- All processes remotely controlled from any workstation
- Multi-Company Edition imports into multiple companies in multiple databases on multiple servers

Requirements:

Customization Manager (CU)

Availability:

Solomon v2.0x, v4.21, v4.5, v5.0, v5.5, v6.0, v6.5, v7.0

Product Cost:

Standard Edition \$1,895.00

Multi-Company Edition \$2,490.00

Multi-Company Upgrade (from Standard Edition) \$595.00

1 Year Annual Maintenance (15%) required

Contact us for more information.



781.861.0572 x702

sales@compup.com

www.compup.com